

CALIFORNIA RESIDENTIAL CODE SECTION R337 SCREENING FORM
Fire Protection Plan 2022 CBC Chapter 7A Screening Form

CBC Chapter 7A Code Section	Yes	No
703A.1 General	X	
703A.2 Qualifications by Testing	X	
703A.3 Approved Agency	X	
703A.4 Labeling	X	
703A.5: 703A.5.1 & 703A.5.2 Weathering and surface treatment protection	X	
703A.5.2.1 Fire-retardant-treated wood	X	
703A.5.2.2 Fire-retardant-treated wood shingles and shakes	X	
703A.5.3 Surface treatment protection	X	
703A.6 Alternate for materials, design, tests, methods of construction	X	
703A.7 Standards of Quality	X	
704A & 704A.1 Ignition-Resistant Construction & General	X	
704A.2 Ignition-Resistant Material	X	
704A.3 Conditions of acceptance for ignition-resistant material	X	
704A.3.1 Fire testing of wood structural panels	X	
704A.4 Alternate methods for determining ignition-resistant material	X	
705A & 705A.1 Hooding & Hooding, General	X	
705A.2 Roof Coverings	X	
705A.3 Roof Valleys	X	
705A.4 Roof Gutters	X	
706A & 706A.1 Vents & Vents General	X	
706A.2 Vents Requirements	X	
706A.2.1 Off ridge and ridge vents	X	
707A, 707A.1 & 707A.2 Exterior Covering, Scope & General	X	
707A.3 Exterior Wall Covering	X	
707A.3.1 Extent of Exterior Wall Coverings	X	
707A.4 & 707A.4.1 Exterior Wall Assemblies & Conditions of Acceptance	X	
707A.5 Open Roof Eaves	X	
707A.6 Enclosed Roof Eaves and Roof Eave Soffits	X	
707A.7 Exterior Porch Ceilings	X	
707A.8 Floor Projections	X	
707A.9 Underfloor Protection	X	
707A.10 Underlayment of Appendages	X	
707A.11 Conditions of acceptance when tested in accordance with ASTM E2367	X	
708A & 708A.1 Exterior Windows, Skylights and Doors & General	X	
708A.2 Exterior Glazing	X	
708A.2.1 Exterior Windows, Skylights and exterior glazed door assembly requirements	X	
708A.2.2 Operable Skylights	X	
708A.2.3 Structural glass veneer	X	
708A.3 Exterior Doors	X	
708A.3.1 Exterior Door Glazing	X	
708A.4 Garage Door Perimeter Gap	X	
709A, 709A.1 & 709A.1.1 Decking, General & Flashing	X	
709A.2 Where required	X	
709A.3 Decking Surfaces	X	
709A.4 Requirements of type of ignition-resistant material in Section 709A.3, Item 1	X	
709A.4.1 Conditions of acceptance for ASTM E2367	X	
709A.4.2 Conditions of acceptance for ASTM E2726	X	
709A.5 Requirements for type of material in Section 709A.3, Item 7	X	
710A & 710A.1 Accessory Buildings and Miscellaneous Structures & General	X	
710A.2 Applicability	X	
710A.3 Where required	X	
710A.3.1 Structures and Accessory Buildings within 3 feet	X	
710A.3.2 Accessory Buildings greater than 120 sq. ft., located 3 feet or more but less than 50 feet	X	
710A.3.3 Accessory buildings: 100 sq. ft. or less, located 3 feet or more but less than 50 feet	X	
710A.3.4 Miscellaneous Structures located 3 feet or more but less than 50 feet	X	
710A.4 Roof Construction	X	

If separate buildings within the same Tract have different responses above, then you must submit additional Screening Form(s) for each portion of the development that has different designs.

Name of Community: RMV RIENDA - SUB AREA 3.4 - AQ42

List the final tract and lot numbers on the lines below that this form is associated to:
VTTM 19309 - LOTS 1 THROUGH 82

David Otis, David Otis as Agent of PULTE, 949-240-5911, April 23, 2024

SYMBOL LEGEND

LOT #	UNIT #	PLAN TYPE

OCFA APPROVAL

ORANGE COUNTY FIRE AUTHORITY
Reviewed by Planning & Development
Service Request Expires After 6 Months of Inactivity

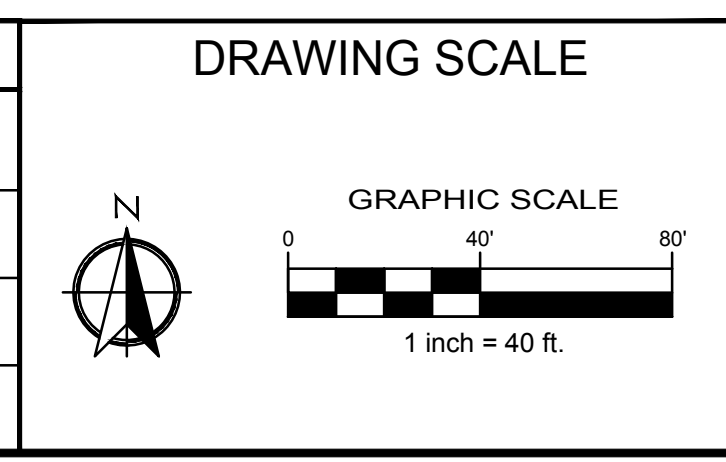
Approval subject to field inspection and required test, notations hereon, conditions in correspondence and conformance with applicable regulations. The stamping of these plans shall not be held to permit or approve the violation of any law.

OCFA SR #: 544568
Fee Codes: PR146
Plan Type: Fire Protection Plan
By: shawmfraley
Date: 04/29/2024

ONLY STAMPED SHEETS REVIEWED BY ORANGE COUNTY FIRE AUTHORITY
Call at least 72 hours in advance to schedule inspections: (714) 573-6150

Notes: _____

NO.	DATE	REVISIONS
1		
2		
3		
4		



CIVIL ENGINEER:

HUNSAKER & ASSOCIATES
IRVINE, INC
3 HUGHES
IRVINE, CA 92618
(949) 583-1010

ARCHITECTURE/PLANNING:

ARCHITECTS - PLANNERS - DESIGNERS

WHA.
680 NEWPORT CENTER DRIVE, SUITE 300
NEWPORT BEACH, CA 92660

PREPARED BY:

firesafe
PLANNING, INC.

28506 AIROSO STREET
RANCHO MISSION VIEJO, CA 92694
(949) 330-8511

PREPARED FOR:

PulteGroup

27401 LOS ALTOS, STE. 400
MISSION VIEJO, CA 92691
(949) 330-8511

PREPARED FOR:

RMV PA3 DEVELOPMENT, LLC

28811 ORTEGA HIGHWAY
SAN JUAN CAPISTRANO, CA 92675
(949) 240-3363

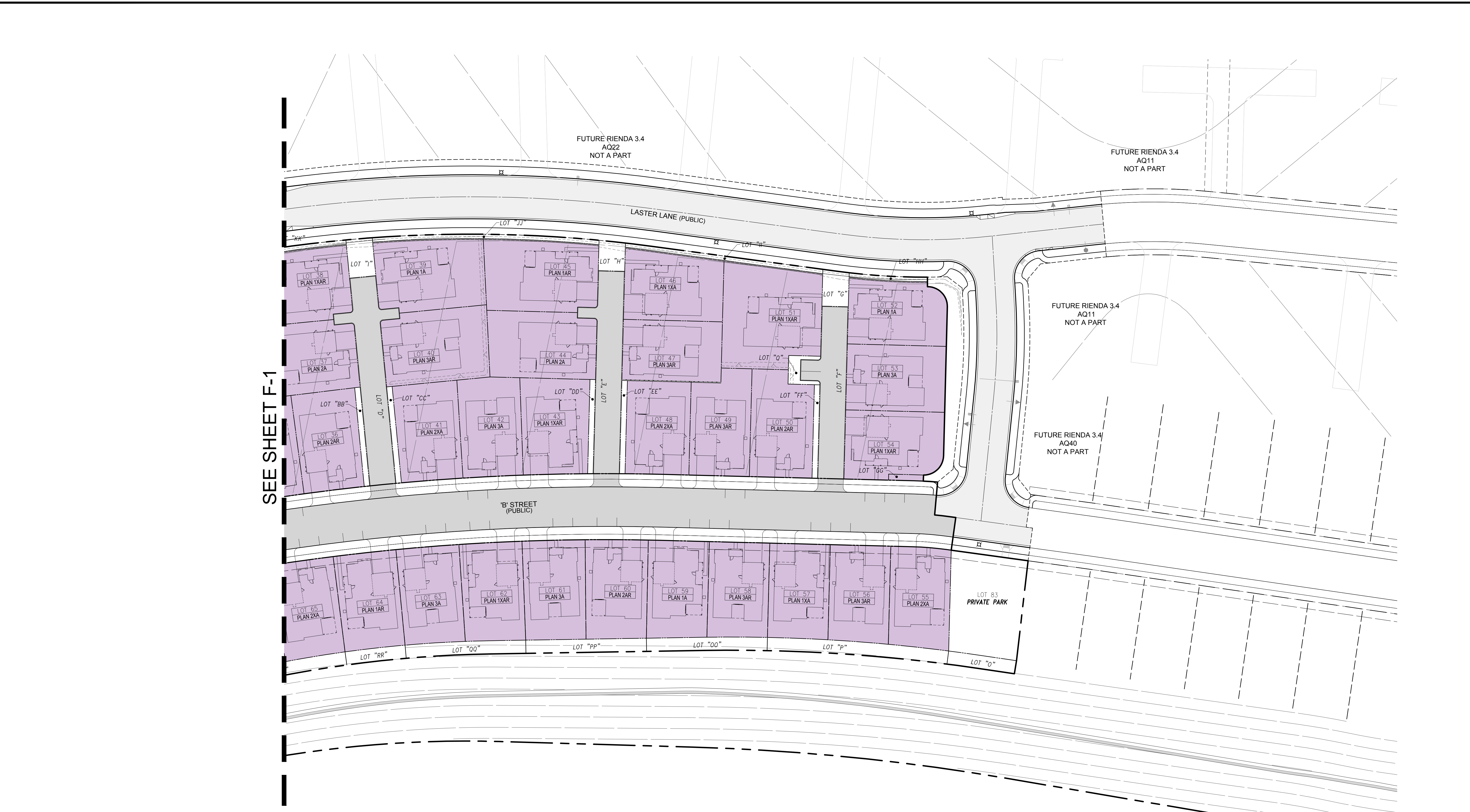
TITLE: **FIRE PROTECTION PLAN
RANCHO MISSION VIEJO
RIENDA PA 3.4
AQ42 VTTM 19309
OCFA SR 544568**

ORANGE COUNTY FIRE AUTHORITY

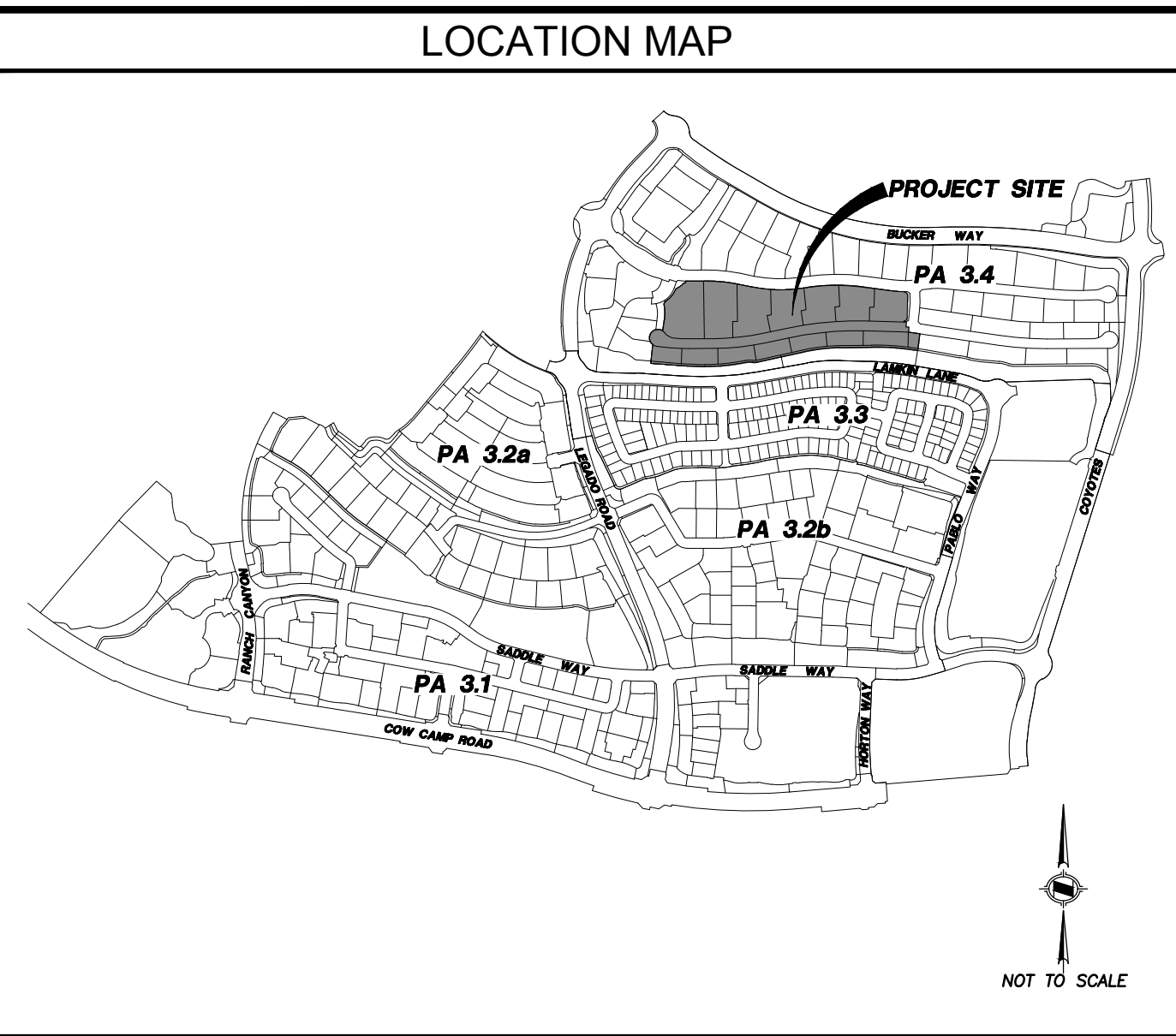
DATE: **04/23/2024**
SHEET: **F-1**
1 OF 2

The use of these plans and specifications shall be restricted to the original site for which they were prepared and publication thereof is expressly limited to such use. Reproduction, publication, or re-use by any method, in whole or in part without the express consent of FIRESAFE PLANNING SOLUTIONS is prohibited.

OCFA SR#544568 - RIENDA AQ42 - FIRE PROTECTION PLAN



SEE SHEET F-1



CALIFORNIA RESIDENTIAL CODE SECTION R337 SCREENING FORM
Fire Protection Plan 2022 CBC Chapter 7A Screening Form

CBC Chapter 7A Code Section	Yes	No
703A.1 General	X	
703A.2 Qualifications by Testing	X	
703A.3 Approved Agency	X	
703A.4 Labeling	X	
703A.5, 703A.5.1 & 703A.5.2 Weathering and surface treatment protection	X	
703A.5.2.1 Fire-retardant-treated wood	X	
703A.5.2.2 Fire-retardant-treated wood shingles and shakes	X	
703A.5.3 Surface treatment protection	X	
703A.5 Alternate for materials, design, tests methods of construction	X	
703A.7 Standards of Quality	X	
704A & 704A.1 Ignition-Resistant Construction & General	X	
704A.2 Ignition-Resistant Material	X	
704A.3 Conditions of acceptance for ignition-resistant material	X	
704A.3.1 Fire Testing of wood structural panels	X	
704A.4 Alternative methods for determining ignition-resistant material	X	
705A & 705A.1 Hooding & Hooding, General	X	
705A.2 Roof Coverings	X	
705A.3 Roof Valleys	X	
705A.4 Roof Gutters	X	
706A & 706A.1 Vents & Vents General	X	
706A.2 Vents Requirements	X	
706A.2.1 Off ridge and ridge vents	X	
707A, 707A.1 & 707A.2 Exterior Covering, Scope & General	X	
707A.3 Exterior Wall Coverings	X	
707A.3.1 Extent of Exterior Wall Coverings	X	
707A.4, 707A.4.1 Exterior Wall Assemblies & Conditions of Acceptance	X	
707A.5 Open Roof Eaves	X	
707A.6 Enclosed Roof Eaves and Roof Eave Soffits	X	
707A.7 Exterior Porch Ceilings	X	
707A.8 Floor Projections	X	
707A.9 Underfloor Protection	X	
707A.10 Underlayment of Appendages	X	
707A.11 Conditions of acceptance when tested in accordance with ASTM E2987	X	
708A & 708A.1 Exterior Windows, Skylights and Doors & General	X	
708A.2 Exterior glazing	X	
708A.2.1 Exterior Windows, Skylights and exterior glazed door assembly requirements	X	
708A.2.2 Operable Skylights	X	
708A.2.3 Structural glass veneer	X	
708A.3 Exterior Doors	X	
708A.3.1 Exterior Door Glazing	X	
708A.4 Garage Door Perimeter Gap	X	
709A, 709A.1 & 709A.1.1 Decking, General & Flashing	X	
709A.2 Where required	X	
709A.3 Decking Surfaces	X	
709A.4 Requirements of type of ignition-resistant material in Section 709A.3, Item 1	X	
709A.4.1 Conditions of acceptance for ASTM E2987	X	
709A.4.2 Conditions of acceptance for ASTM E2728	X	
709A.5 Requirements for type of material in Section 709A.3, Item 7	X	
710A & 710A.1 Accessory Buildings and Miscellaneous Structures & General	X	
710A.2 Applicability	X	
710A.3 Where required	X	
710A.3.1 Structures and Accessory Buildings within 3 feet	X	
710A.3.2 Accessory Buildings greater than 120 sq.ft., located 3 feet or more but less than 50 feet	X	
710A.3.3 Accessory buildings, 101 sq.ft. or less, located 3 feet or more but less than 50 feet	X	
710A.3.4 Miscellaneous Structures located 3 feet or more but less than 50 feet	X	
710A.4 Roof Construction	X	

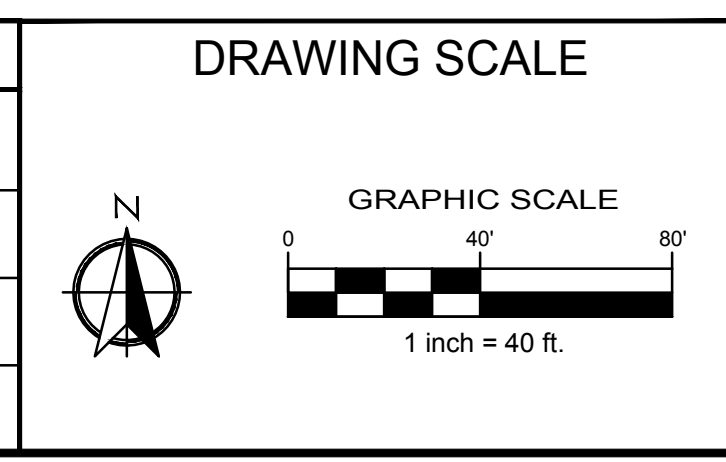
If separate buildings within the same Tract have different responses above, then you must submit additional Screening Form(s) for each portion of the development that has different designs.
Name of Community: RMV RIENDA - SUB AREA 3.4 - AQ42
List the final tract and lot numbers on the lines below that this form is associated to:
VTM 19307 - LOTS 1 THRU 64 82
David Otis, David Otis as Agent of PULTE, 949-240-5911, April 23, 2024

SYMBOL LEGEND

LOT #	UNIT #	PLAN TYPE

OCFA APPROVAL

NO.	DATE	REVISIONS
1		
2		
3		
4		



CIVIL ENGINEER:

IRVINE, INC
3 HUGHES
IRVINE, CA 92618
(949) 583-1010

ARCHITECTURE-PLANNING:

ARCHITECTS - PLANNERS - DESIGNERS
680 NEWPORT CENTER DRIVE, SUITE 300
NEWPORT BEACH, CA 92660

PREPARED BY:

28506 AIROSO STREET
MISSION VIEJO, CA 92694
(949) 240-5911

PREPARED FOR:

27401 LOS ALTOS, STE. 400
MISSION VIEJO, CA 92691
(949) 330-8511

PREPARED FOR:

28811 ORTEGA HIGHWAY
SAN JUAN CAPISTRANO, CA 92675
(949) 240-3363

TITLE: FIRE PROTECTION PLAN
RANCHO MISSION VIEJO
RIENDA PA 3.4
AQ42 VTM 19309
OCFA SR 544568
ORANGE COUNTY FIRE AUTHORITY

DATE: 04/23/2024
SHEET: F-2
2 OF 2

The use of these plans and specifications shall be restricted to the original site for which they were prepared and publication thereof is expressly limited to such use. Reproduction, publication, or re-use by any method, in whole or in part without the express consent of FIRESAFE PLANNING SOLUTIONS is prohibited.