

6-3-93

STAFF ALTERNATIVE 'B' GOREN PARCEL

AP 92-004
SP 91-075

1450'

BASELINE PLAN

PREPARED FOR: OCEMA PLANNING DEPT.
PREPARED BY: TIERRA PLANNING & DESIGN

LOT #	LOT SIZE	PAD SIZE	EST. CUT	EST. FILL
LOT 1	3.1 ac	8,486sf.	617c.y.	1492c.y.
LOT 2	4.6	10,578	-	4,577
LOT 3	5.2	10,191	-	2,698
LOT 4	4.5	9,300	-	1,235
LOT 5	4.3	9,920	-	1,493
LOT 6	1.6	9,920	2,655	-
LOT 7	2.4	9,300	2,181	-
LOT 8	3.9	13,300	1,407	645
LOT 9	3.0	11,000	487	1,162

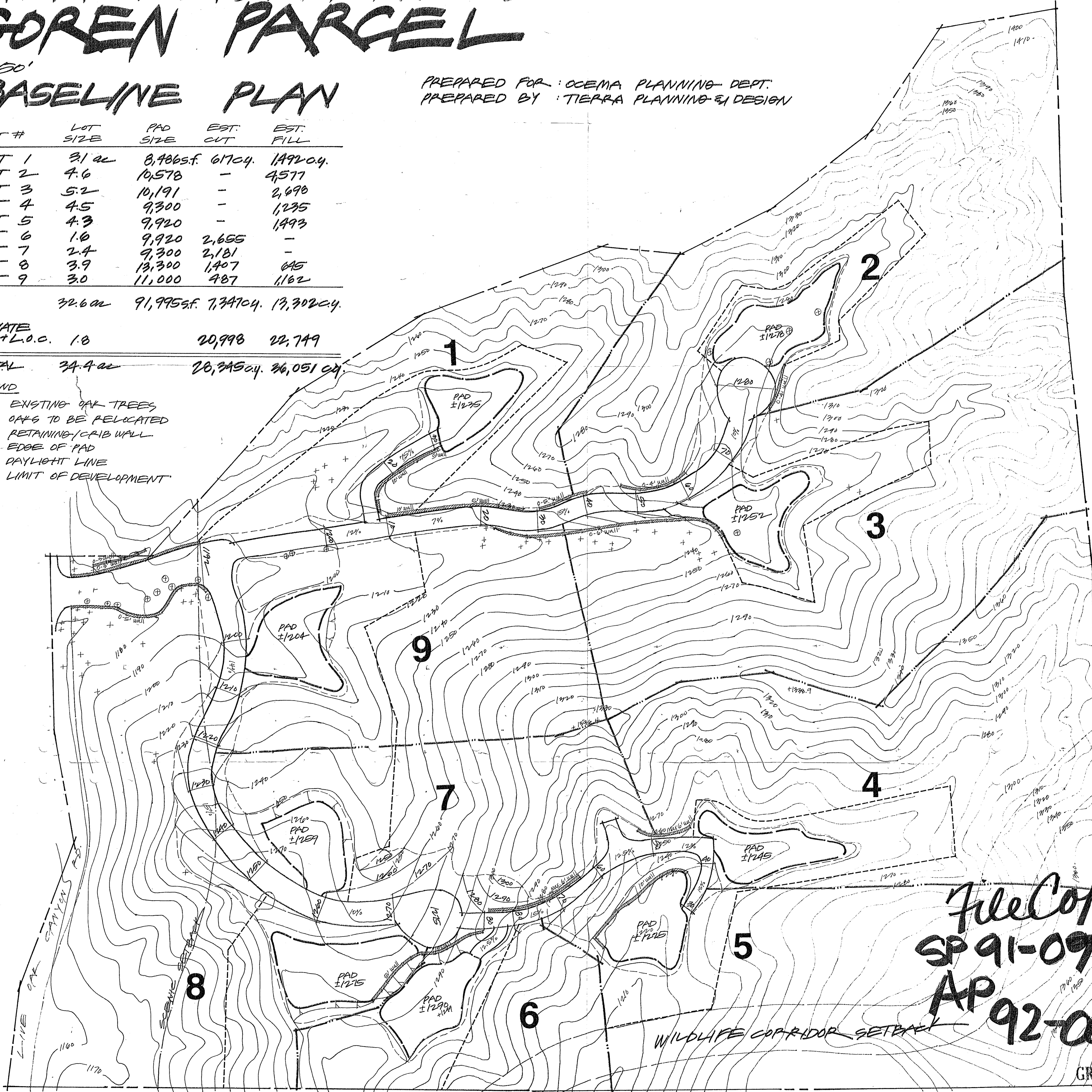
32.6 ac 91,995sf. 7,347c.y. 13,302c.y.

PRIVATE
RDS+L.O.C. 1.8 20,998 22,749

TOTAL 34.4 ac 20,345c.y. 36,051c.y.

LEGEND

- +++ EXISTING OAK TREES
- ⊕ OAKS TO BE RELOCATED
- ▨ RETAINING/CRIB WALL
- EDGE OF PAD
- - - DAYLIGHT LINE
- - - LIMIT OF DEVELOPMENT



File Copy
SP 91-095
AP 92-004/P

See Board of Supervisors
Resolution 93-1182

OCPL
Resolution 93-05

TIERRA
Planning & Design

GRANTED
WITH
CONDITIONS
BY ACTION OF THE
ORANGE COUNTY
PLANNING COMMISSION
July 13, 1993